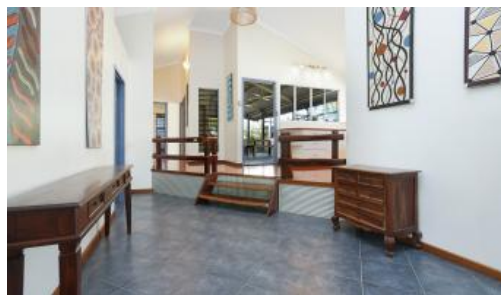




7 Trochus Cres, Woolner



TROPICAL LIVING – QUIRKY CHARACTER HOME!

Dare to be different! If you are looking for a home that stands out from the run of the mill block constructed standard project homes, then look here. This is a home designed for tropical living, with a quirky character of its own. Looks can be deceiving, at the first impression from kerbside you wouldn't imagine the home could be split-level. The moment you walk through the front door you will appreciate the high cathedral ceiling. On the lower level is the second and third bedrooms. Each bedroom is tiled, air-conditioned and come with mirrored robes. Step up to the kitchen and living space, where gleaming timber floors are featured throughout. The polished timber floors continue along to the master bedroom. Steps lead down from the master bedroom to the semi enclosed Bali influenced ensuite. The kitchen, living space and master bedroom feature French doors all opening onto the rear verandah and deck.

Woolner is a great suburb. Five minutes from the City with quality homes throughout, generally without the high property prices of the other neighbouring city suburbs of Stuart Park and Larrakeyah. Nearby at Tipperary is a local convenience store plus two popular restaurants, Bamboo Lounge and Flying Nemo. Taking the short cut up the hill you can walk to Parap Village and the lively Saturday Parap Markets.

- Designed for tropical living, a quirky character home
- A three bedroom home with high cathedral ceilings
- Split-level with a combination of tiles & popular timber floorboards
- Air conditioned throughout - mirrored robes in bedrooms 2 & 3
- Spacious semi-enclosed Bali influenced ensuite, dual showerheads

3 2 1

Price SOLD for \$625,000
Property Type Residential
Property ID 1808

AGENT DETAILS

Lois Williams - 0408 881 477

OFFICE DETAILS

Darwin
 74 Cavenagh Street Darwin NT 0800
 Australia
 08 8943 2432



KG YOUNG & ASSOCIATES PTY LTD
LICENSED REAL ESTATE AGENTS ACN 600 596 712

- The master bedroom features a walk-in wardrobe
- New Stainless-Steel Dishwasher, Gas hot plates & Gas HWS
- Louvre windows throughout with security bars for peace of mind
- The Laundry has good storage & direct access to side space
- Great sized rear deck the perfect place to relax & dine
- French doors from the Kitchen, Living space & master bedroom
- Handy lockup storage space at the back of the home
- Not the run of the mill block constructed standard project home

An interesting home that should be viewed!

The above information provided has been furnished to us by the vendor/s. We have not verified whether or not that information is accurate and do not have any belief in one way or the other in its accuracy. We do not accept any responsibility to any person for its accuracy and do no more than pass it on. All interested parties should make and rely upon their own inquiries in order to determine whether or not this information is in fact accurate.